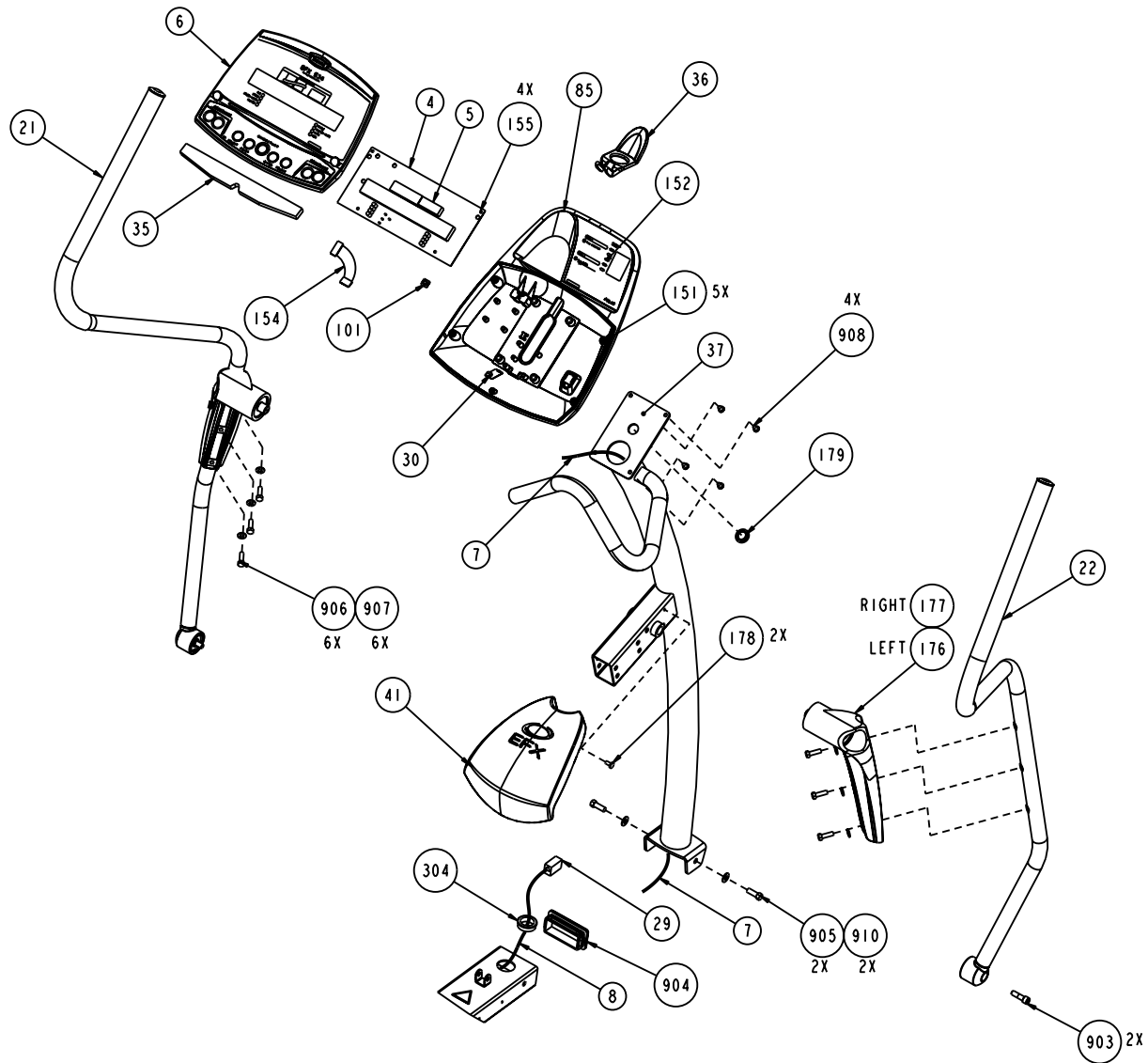
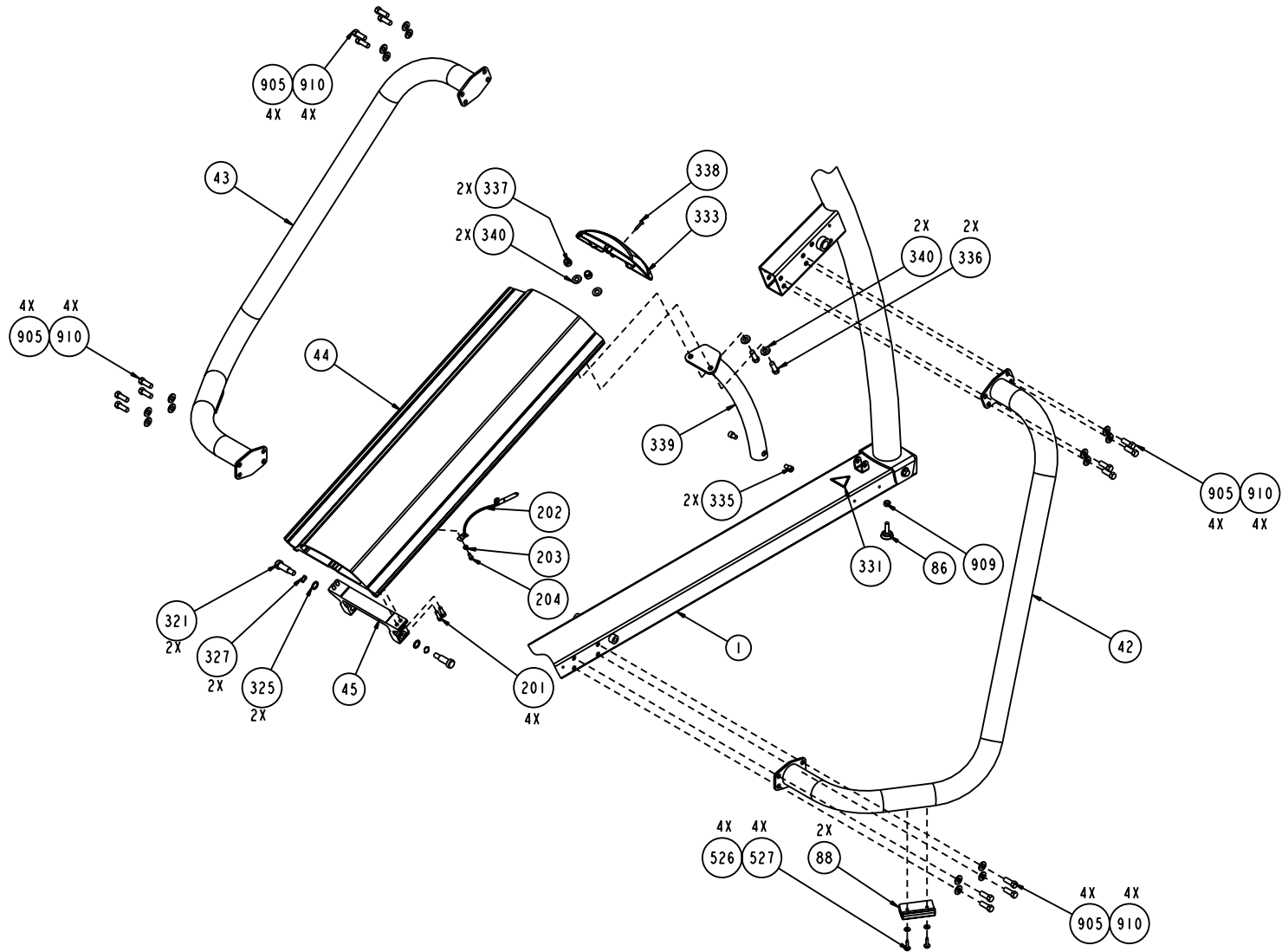


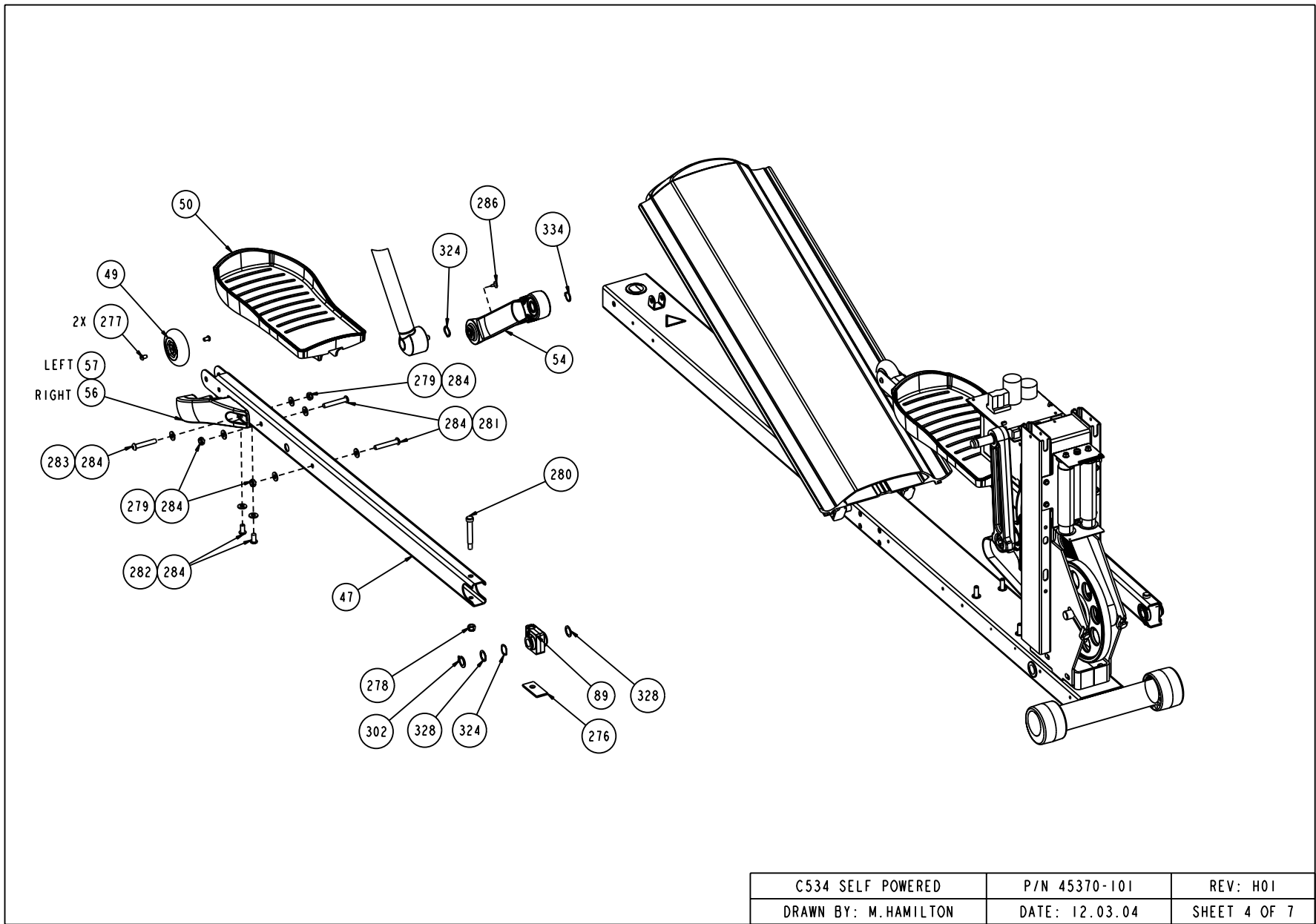
C534 SELF POWERED	P/N 45370-101	REV: H01
DRAWN BY: M.HAMILTON	DATE: 12.03.04	SHEET 1 OF 7



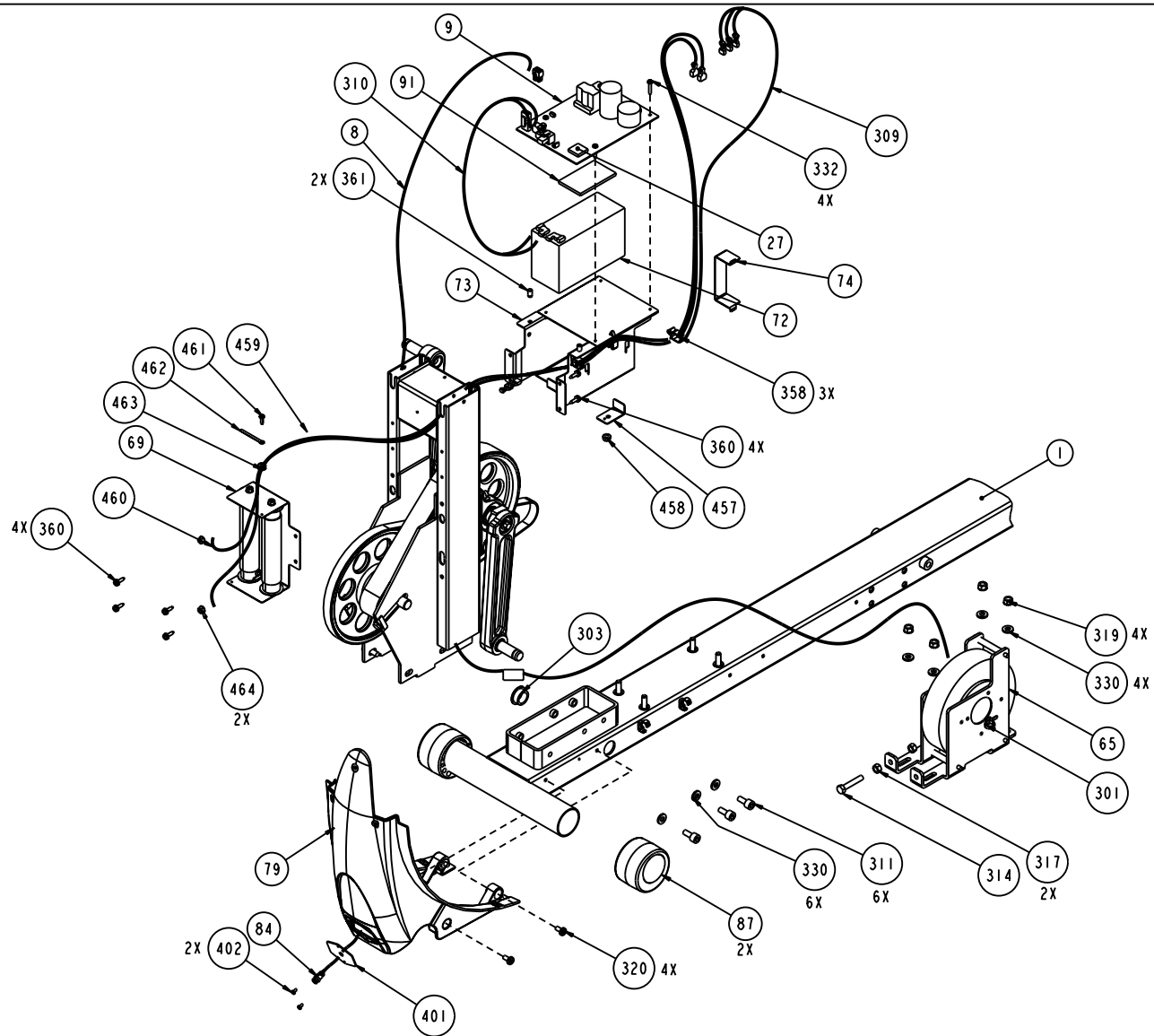
C534 SELF POWERED	P/N 45370-101	REV: H01
DRAWN BY: M.HAMILTON	DATE: 12.03.04	SHEET 2 OF 7



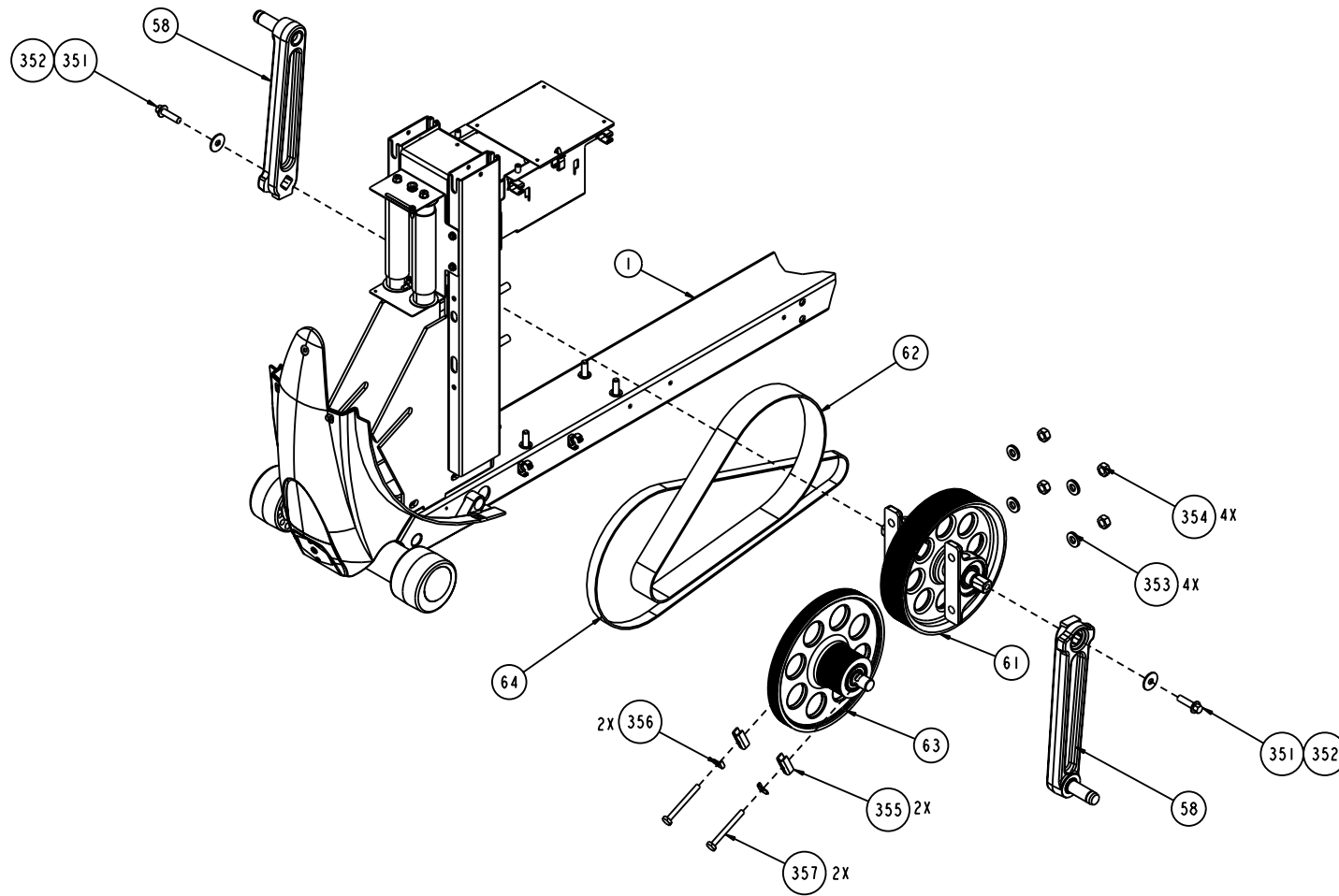
C534 SELF POWERED	P/N 45370-101	REV: H01
DRAWN BY: M.HAMILTON	DATE: 12.03.04	SHEET 3 OF 7



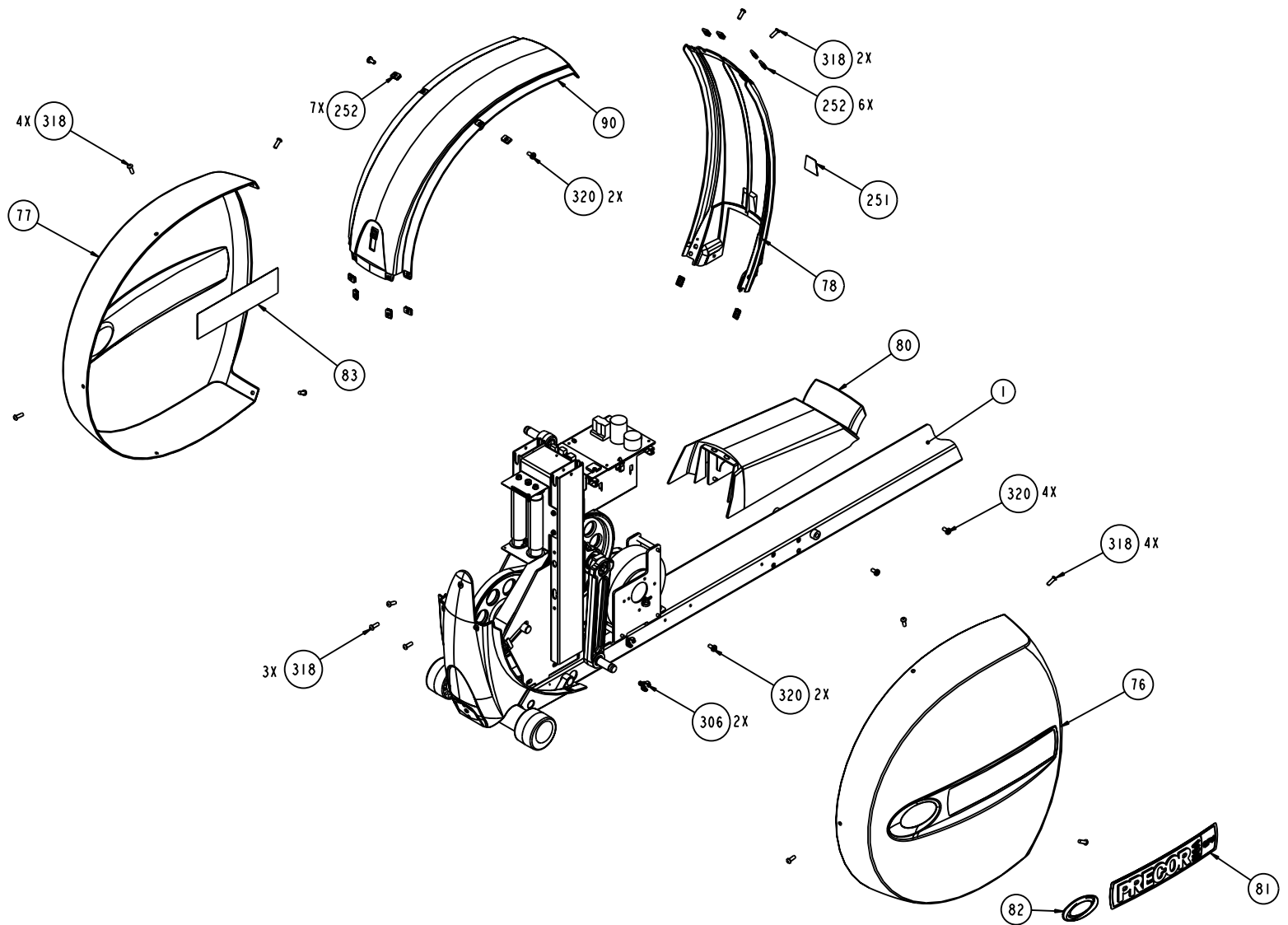
C534 SELF POWERED	P/N 45370-101	REV: H01
DRAWN BY: M.HAMILTON	DATE: 12.03.04	SHEET 4 OF 7



C534 SELF POWERED	P/N 45370-101	REV: H01
DRAWN BY: M.HAMILTON	DATE: 12.03.04	SHEET 5 OF 7



C534 SELF POWERED	P/N 45370-101	REV: H01
DRAWN BY: M.HAMILTON	DATE: 12.03.04	SHEET 6 OF 7



C534 SELF POWERED	P/N 45370-101	REV: H01
DRAWN BY: M.HAMILTON	DATE: 12.03.04	SHEET 7 OF 7

**C534 (serial code W1, W2)**

<b>Part Number</b>	<b>Description</b>	<b>Bubble Number</b>	<b>Your Price</b>
45352-101	WLDMT, LWR FRM, VERT EFX, THD, PT	1	\$180.96
45737-106	ASSY, UPPER PCA & SW, C534-T3	4	\$211.92
45943-101	ASSY,DISPLAY,TOUCHSENSOR,ENG T3 C53	6	\$165.44
44905-084	ASSY,CBL,MOD,8P8C,1-1,84"	7	\$3.60
44905-108	ASSY,CBL,MOD,8P8C,1-1,108"	8	\$4.40
44306-513	PCA,EFX,SELF PWR,LWR,WO/LIFT	9	\$264.72
45600-522	PCA, EFX SELF POWER, 3-PHASE, WO/LI	9	\$262.16
45064-111	ASSY, LOWER PCA & SW, SELF POWER EF	9.01	\$305.60
44389-103	ASSY, HANDLEBAR, LEFT, 5.33	21	\$102.11
44389-104	ASSY, HANDLEBAR, RIGHT, 5.33	22	\$94.00
45115-205	CPU,PGMD,EFX,SELF PWR,LWR,WO/LIFT,V	27	\$72.00
45115-211	CPU, PGMD, EFX, SELF POWER 3-PHASE,	27	\$0.00
11415-101	COUPLER,MOD,8P8C,INLINE	29	\$7.28
48026-101	RECEIVER, WIRELESS, HEART RATE, POL	30	\$55.36
43329-102	WIRE FORM,PLASTIC,COMMERCIAL	36	\$6.48
44322-104	WELDMENT, ARC TUBE, THREADED, 5.33	37	\$181.44
44384-101	COVER, UPPER MOUNT, RETAIL EFX, CHA	41	\$18.88
44318-104	WELD,MAIN TUBE,RIGHT,RETAIL EFX,PT	42	\$44.69
44318-103	WELD,MAIN TUBE,LEFT,RETAIL EFX,PT	43	\$35.76
45401-102	ASSY, RAMP, C534	44	\$190.08
44333-103	ASSY, RAMP, LIFT BRKT, RETAIL EFX	45	\$52.72
44344-205	STAIRARM RAIL,5.33 EFX,PT	47	\$34.00
46922-101	ASSY, STAIRARM WHEEL, CONSUMER EFX	49	\$51.20
48337-101	ASSY, STAIRARM WHEEL, CONSUMER EFX,	49	\$44.24
37314-108	PEDAL, FOOT	50	\$37.52
43191-101	ASSY,LINK,SECONDARY	54	\$60.56
43240-102	ASSEMBLY, ARM, CONNECTOR, RIGH	56	\$35.20
43240-101	ASSEMBLY, ARM, CONNECTOR, LEFT	57	\$35.20
44363-103	ASSEMBLY, CRANK ARM, RETAIL, W/PRES	58	\$46.72
44947-101	ASSEMBLY, DRIVE INPUT,SP EFX	61	\$155.28
10217-133	BELT, DRIVE, 340J16 POLY V	62	\$34.24
44944-101	ASSY,STEP-UP PULLEY,SP,EFX	63	\$103.68
10217-121	BELT, POLY-V, 44 , 440J6	64	\$30.24
44739-103	ASSEMBLY,SP,GENERATOR	65	\$166.80
11437-020	RES,PWR,20 OHMS,300W,10%,	67	\$35.20
39700-101	ASSEMBLY, RESISTOR, 240W	69	\$82.64
45907-101	BRACKET, RESISTOR SUPPORT,EFX	69	\$30.88
44952-103	CLIP,RESISTOR,SELF POWERED EFX	71	\$8.40
45970-101	ASSY, BATTERY W/CABLE,SLA,12V,7AH,.	72	\$55.76
44951-102	BRACKET,BATTERY,SELF POWERED EFX	73	\$56.32
45908-105	BRACKET, BATTERY, LARGE, SELF POWER	73	\$46.40
45909-101	SPACER, BATTERY BRACKET, SELF-POWER	74	\$46.40
44940-101	ASSY,DRIVE WELDMT,SP EFX	75	\$139.52
44527-106	ASSY, EFX COVER, RIGHT SIDE	76	\$61.68
44527-108	ASSY, EFX COVER, LEFT SIDE, SP	77	\$61.68
44479-101	ASSY, FRONT PANEL, EFX COVER, REAR	78	\$26.48
43707-102	SUPPORT, REAR COVER,CHARCOAL GRAY	79	\$28.64
43840-101	WEDGE, REAR COVER, EFX,CHARCOAL GRA	80	\$26.56
45252-035	ASSY,CBL,2C,PWR JACK/.08 RECP,35"	84	\$35.36
43179-103	BACKPLATE, DISPLAY, COMMERCIAL, CHA	85	\$41.60
11406-103	FOOT, LEVELER, RUBBER BASE, 1.5"LG	86	\$3.60
37534-102	FOOT, ADJUSTABLE	87	\$19.84
37535-102	FOOT, FIXED	88	\$2.16
38301-101	ASSY,PIVOT BLOCK	89	\$34.80
44480-102	ASSY, TOP PANEL, EFX COVER, REAR	90	\$29.84
41650-502	BATTERY, PAD, 3.25 X 2.0 X 3/16 THI	91	\$1.96
PKCN019-075	SCREW,S/T,#10X.75,WSHHXHD,ZN	97	\$0.32
PMKN016-050	SCREW,TCS,#8X1/2,PHIL,BLK ZN,TYPE25	151	\$0.32



45355-101	LABEL, ACCESSORY TRAY,EN, C534	152	\$21.20
10123-102	CABLE TIE, 3-7/8 LONG,WHITE,NYL	153	\$0.32
45696-032	ASSY,CBL,FFC,12COND,28AWG,3.2"	154	\$17.76
MGCN016-038	SCREW,MCH,8-32X3/8,PANHD,PHIL,	155	\$0.32
44321-102	ASSY, ARC TUBE, THREADED	159	\$246.80
44391-501	ASSY,CASTING,UPPER,LEFT,OUTSRCD	176	\$97.36
44391-502	ASSY,CASTING,UPPER,PIVOT,RT,OUTSRCD	177	\$97.36
PANKN025-050	SCREW,S/T,#1/4-20X1/2,PANHD,PHIL,BZ	178	\$0.40
47718-102	HOLE PLUG, PLASTIC .875 X.13-.18	179	\$0.64
CAKN025-088	SCREW,SKHD,1/4-20X7/8,BLK ZN,LK	201	\$0.32
11476-102	PIN, RING, LOCKOUT	202	\$9.04
WATNN020-002	WASHER, LK-INT, #10, ID=.200,	203	\$0.32
CBKN019-050	SCREW,SKHD,#10X32X0.50,BLK ZN,LK	204	\$0.56
10136-103	CLIP,U TYPE, TINNEMAN, 1/4-20	252	\$2.00
48340-101	SPACER, RAIL, URETHANE	276	\$0.96
TENE006-010	SCREW,BTTNHD,SKT C/S,M6X1X10MM	277	\$0.80
KDKN031-025	LOCKNUT, HALF, 5/16-18,BLK ZN	278	\$0.32
KAKN031-016	LOCKNUT,HALF, 5/16-18,BLK ZINC	279	\$0.80
RAKN031-200	SCREW,SHLDR,3/8 X 2 ,HEX	280	\$3.36
TAKN031-200	SCREW,BTHD,5/16-18X2,BLK ZN	281	\$1.60
TAKN031-063	SCREW,BTHD,5/16-18X5/8,BLK ZN	282	\$1.92
TAKN031-188	SCREW, BTHD,5/16-18X1-7/8,BLK ZN	283	\$1.12
WBKN031-007	WASHER, FLT, 5/16, ID=.344,	284	\$0.64
45484-101	PLASTIC MUSHROOM CAP	286	\$0.80
AAHN063-003	RING, RETAINER, 5/8, EXTERNAL	302	\$0.32
10178-107	BUSHING, SNAP	303	\$0.32
10178-112	BUSHING, SNAP	304	\$0.32
12515-101	CLAMP, CABLE, BLACK, RELEASABLE ON	306	\$5.60
45254-040	ASSY,CBL,3C,18AWG,MINIFIT/QK DISC	309	\$26.08
CAKN031-075	SCREW,SKHD,5/16-18X0.75,BLK ZN,LK	311	\$0.40
HJCN031-175	SCREW,HEX,5/16-18X1.75 ,ZINC,FULLY	314	\$0.56
KMCN031-023	NUT, HEX, 5/16-18, ZINC	317	\$0.32
TFKN025-075	SCREW,BTHD,1/4-20X3/4,BLK ZN	318	\$0.32
KGCN031-027	LOCKNUT,STARWASHER,5/16-18,1/2	319	\$0.32
PNKN025-050	SCREW,PANHD,PHIL,TYPEF,1/4-20X.5,BZ	320	\$0.40
RAKN038-125	SCREW,SHLD,3/8X1-1/4,HEXSC,BLK ZN	321	\$4.24
WAGNN062-001	WASHER, WAVE, .87 OD X .62 ID	324	\$1.28
WAGNN048-001	WASHER,WAVE (SSR-0062)	325	\$1.76
WNNN051-002	WASHER,SHIM,1/2X3/4X.020THK	327	\$0.40
WNNN063-001	WASHER, FLT, 5/8X.880X.010	328	\$0.32
WRCN031-009	WASHER,GRADE 8,3/8,13/32 ID,13/16OD	330	\$0.40
43232-501	LABEL,CAUTION PINCH POINTS	331	\$2.48
PMKN016-088	SCREW,TCS,#8X7/8,PHIL,BLK ZN,TYPE 2	332	\$0.48
44386-101	COVER, RAMP FRONT, 5.33, CHARCOAL G	333	\$6.80
ABHN017-001	RING, RETAINER, EXTERNAL	334	\$0.40
CAKN031-048	SCREW,SHC, 5/16-18X7/16 LG, BLK ZN	335	\$1.12
HAKN038-100	SCREW,HEXHEAD,GRADE2,3/8-16X1,BLKZN	336	\$1.12
KDKN038-034	LOCKNUT,FULL,3/8-16,BLK ZN	337	\$0.32
PGKN016-100	SCREW, S/T, #8 X 1, TRS, PHIL, BLK	338	\$0.80
44341-101	WELDMENT,RAMP SUPPORT,5.33,PT	339	\$65.20
WBKN038-007	WASHER, FLT, 3/8, ID=.406, BLK ZN	340	\$0.32
WNNN032-009	WASHER,FLT, .321X1.00X.090 THK	351	\$0.40
HTKT008-018	BOLT,SHIMANO CRANK,M8X18MM, NYLK	352	\$3.20
WRCN038-011	WASHER,GRADE 8,3/8,13/32 ID,13/16OD	353	\$0.96
KGCN038-033	LOCKNUT, STARWASHER, 3/8-16	354	\$0.32
37385-101	BRACKET, TENSIONER	355	\$2.72
37855-103	TAB, LOCKING	356	\$0.64
HACN025-250	SCREW,1/4-20X2-1/2,HEX,GR 2,ZN	357	\$0.32
11278-101	CABLE CLAMP,INSERT	358	\$1.04
PKCN019-050	SCREW,S/T,#10X1/2,WSHHXHD,ZN	360	\$0.32

12289-806	SPCR,SELFRETAIN,NYLN,#8(M-4),3/8"	361	\$0.40
44966-102	PLATE,CHARGER CONNECTOR,SP, EFX	401	\$18.80
MGKN013-025	SCREW,MCH,6-32X1/4,PANHD,PHIL,	402	\$0.32
12103-101	CLAMP,CABLE,VINYL COATED	451	\$2.16
47098-026	ASSY,CBL, HIGH TEMP, 600V,	452	\$18.00
47098-036	ASSY,CBL, HIGH TEMP, 600V,	453	\$22.24
DECN019-038	SCREW,SEMS,#10-32X.375,PHIL,	454	\$0.32
KHCN019-013	LOCKNUT, STARWASHER, 10-32,	455	\$0.32
PGKN016-050	SCREW,S/T,#8X1/2,TRS,PHIL,BLK	456	\$0.32
45910-101	TAB, BATTERY BRACKET, SELF-POWERED	457	\$1.60
KGCN025-020	LOCKNUT,STARWASHER,1/4-20,ZN	458	\$0.32
47098-031	ASSY,CBL, HIGH TEMP, 600V,	459	\$22.24
47098-027	ASSY,CBL, HIGH TEMP, 600V,	460	\$18.00
PMKN016-050	SCREW,TCS,#8X1/2,PHIL,BLK ZN,TYPE25	461	\$0.32
12103-101	CLAMP,CABLE,VINYL COATED	462	\$2.16
10379-109	GROMMET, 49/64 OD, 1/4 ID	463	\$0.80
KNCN019-013	NUT,HEX,10-32,ZINC	464	\$0.32
PKCN019-075	SCREW,S/T,#10X.75,WSHHXHD,ZN	526	\$0.32
WBCN019-005	WASHER, SAE, #10, ZN	527	\$0.32
10186-104	WRENCH, ALLEN, 5/16	902	\$1.84
43294-101	SCREW, SHOULDER	903	\$5.39
11311-101	ENDCAP, REC TUBE, BLACK PLASTIC, 50	904	\$4.16
HAKN038-100	SCREW,HEXHEAD,GRADE2,3/8-16X1,BLKZN	905	\$1.12
HCKN031-100	SCREW,HEX,GR 5, 5/16-18 X1LG,BLK ZN	906	\$1.28
WBKN031-007	WASHER, FLT, 5/16, ID=.344,	907	\$0.64
MGKN025-050	SCREW, PANHD, 1/4-20 X .5, BLK ZN	908	\$0.40
KPCN031-019	NUT,HEX THIN,5/16-18,ZN	909	\$0.32
WBKN038-007	WASHER, FLT, 3/8, ID=.406, BLK ZN	910	\$0.32